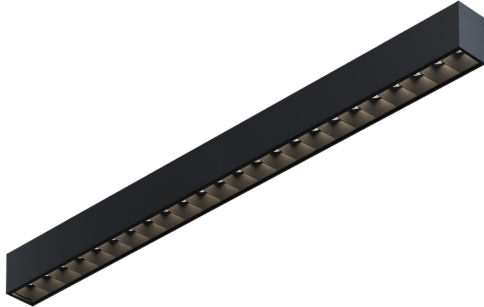


# Sharp module

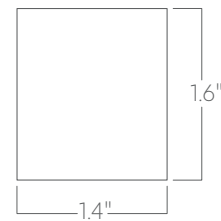


The Sharp module uses specially designed beam shaping optical cells for glare free and effective lighting.

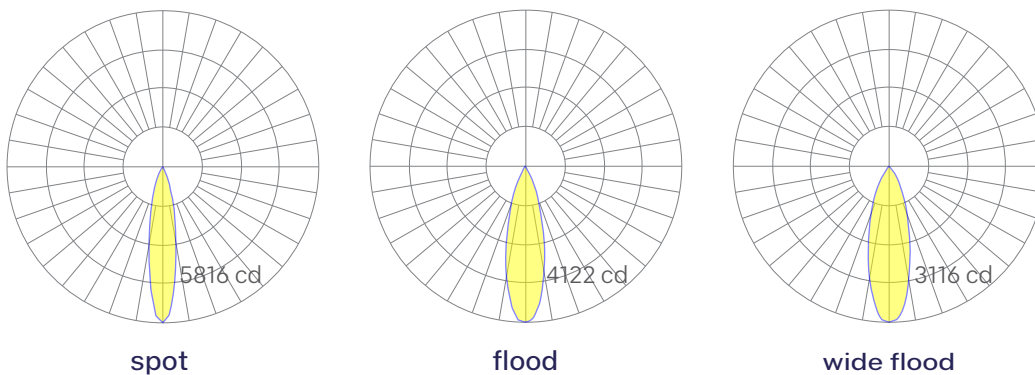
## Features

- Magnetically held and easily repositioned on site
- Available in lengths up to 8' (1' increments)
- Extruded, recycled, premium aluminum housing
- Aluminum core LED boards, specifiable optics
- Specifiable color temperature. CRI > 90, R9 >50
- 5 Year, 50,000 hour warranty

## Dimensions



## Optics



Representative distribution and peak candela. For other options see order information or IES files [here](#).

# Sharp module



## Ordering Information



Example: MAG-BAF- 2' - 35 - MED - BLK - W - SP - NA

Fixture ID	1	Length (Nominal)	2	Color Temperature	3	Output	4
<b>MAG-BAF</b>		1 1ft 2 2ft 4 4ft 6 6ft 8 8ft X' Specify length		27 2700K/90 CRI 30 3000K/90 CRI 35 3500K/90 CRI 40 4000K/90 CRI		<b>LOW</b> Low output <b>MED</b> Medium output <b>HIGH</b> High output	
		<small>*Available in nominal 1" increments, maximum total length of 8'.</small>					
Finish	5	Beam Spread	6	Circuit	7		
<b>5a - Housing</b> W White BLK Black CC Custom Color		SP 20° Beam; 5816 CBCP FL 26° Beam; 4122 CBCP WFL 32° Beam; 3116 CBCP		NA None EMPCK Emergency Battery Pack EMCKT Emergency Circuit			
<b>5b - Louver</b> W White BLK Black							
<small>*Custom Color. See finish options <a href="#">here</a>.</small>							

## Performance

Output <sup>1</sup>	Watts/ft	Lumens/ft
Low	5	313
Medium	7.25	454
High	10	613

Based on a typically configured 90 CRI, 3500K luminaire using one driver and FL beam spread.

<sup>1</sup>For 4000k, multiply by 105; for 3000k, 0.9; for 2700k, 0.92.