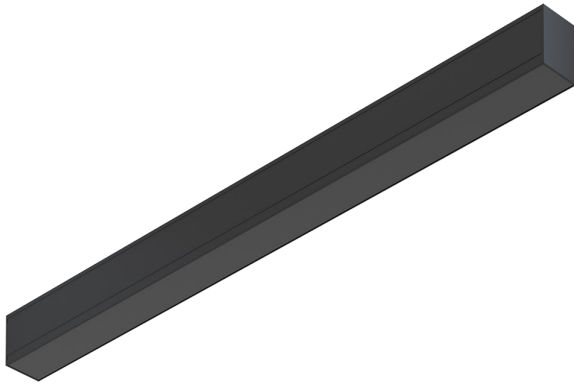


# LS3 Black Optic direct

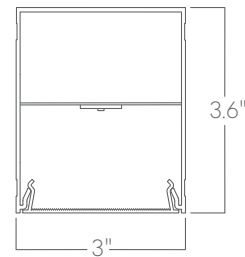


The Black Optic Series of architectural luminaires seamlessly blends into dark surroundings. Custom lengths and patterns are tailored to suit any modern space.

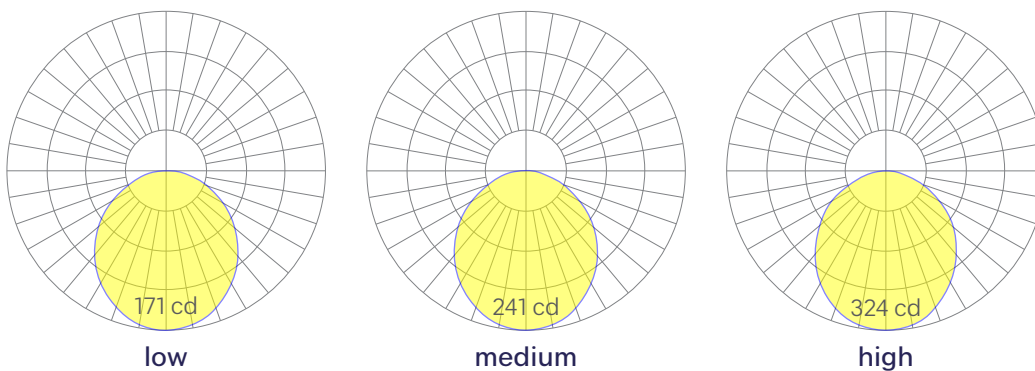
## Features

- Extruded recycled aluminum housing
- Aluminum core LED boards, specifiable output
- Specifiable color temperature. CRI > 90, R9 > 50
- Custom lengths, welded patterns, and finishes available
- Integral specifiable dimmable drivers or PoE
- 5 Year, 50,000 hour warranty, damp location rated
- Compatible with all wood ceilings
- WELL Building Standard compatible [learn more](#)

## Dimensions



## Optics



Representative distribution and peak candela. For other options see order information or IES files [here](#).

# LS3 Black Optic direct

## Ordering Information

For each option group below specify one option. If you don't see your preferred option listed, contact us for [help](#).

1	Fixture ID	2	Length	3	Color Temperature	4	Output
	<b>LS3 BKO</b>	<b>2</b>	2 ft	<b>27</b>	2700K/90 CRI	<b>LOW</b>	Low output
		<b>4</b>	4 ft	<b>30</b>	3000K/90 CRI	<b>MED</b>	Medium output
		<b>8</b>	8 ft	<b>35</b>	3500K/90 CRI	<b>HIGH</b>	High output
		<b>X'-X"</b>	Specify Length	<b>40</b>	4000K/90 CRI	<b>CUST</b>	Custom output Specify Watts or lumens
		<b>PAT</b>	Pattern (Consult Factory)	<b>50</b>	5000K/90 CRI		
				<b>WD</b>	Warm Dim 2200K-3000K Must use WD10 driver		
				<b>TW</b>	Tunable White 2700K-6500K Must use WD10 or PSQ driver		
				<b>RGBW30</b>	RGB +white, 3000k Remote DMX. High output unavailable.		
				<b>RGBW35</b>	RGB +white, 3500k Remote DMX. High output unavailable.		
				<b>RGBW40</b>	RGB +white, 4000k Remote DMX. High output unavailable.		
5	Voltage	6	Driver	7	Finish	8	Mounting
<b>UNV</b>	Universal (120/277V)	<b>DB</b>	Standard 0-10V 1%	<b>W</b>	White	<b>AC</b>	Aircraft cable (50")
<b>347V</b>	347V Available for DB Driver only	<b>DB.1%</b>	0-10V 0.1%	<b>BLK</b>	Black	<b>ACTB9</b>	Aircraft cable, Tbar clip, 9/16"
		<b>ELV</b>	Reverse Phase 1% (120V only) For compatible dimmers see <a href="#">here</a> .	<b>SLV</b>	Silver	<b>ACTB15</b>	Aircraft cable, Tbar clip, 15/16"
		<b>TRI</b>	Forward phase (120V only) For compatible dimmers see <a href="#">here</a> .	<b>CC</b>	Custom Color See finish options <a href="#">here</a> .	<b>ACTBSG</b>	Aircraft cable, Tbar clip, Slot Grid
		<b>LDE</b>	Lutron Digital EcoSystem	<b>CWF</b>	Custom Wood Finish See finish options <a href="#">here</a> .	<b>AC3.5</b>	3.5" canopy + Jbox adaptor adaptor must be mudded-in.
		<b>DALI</b>	DALI-2 Driver			<b>ACCC</b>	Aircraft cable to Conduit Pipe Canopy
		<b>PoE</b>	Power over ethernet.			<b>PS-X</b>	Pendant stem (12", 18", 24", 36", 48")
		<b>TW10</b>	Dual channel, 0-10V for tunable white.			<b>SMHC</b>	Surface Mount, Hard Ceiling
		<b>WD10</b>	0-10V Warm Dim			<b>SMTB9</b>	Surface Mount, Tbar Clip, 9/16"
		<b>PSQ</b>	Lutron T-Series 2-channel 1% for tunable white			<b>SMTB15</b>	Surface Mount, Tbar Clip, 15/16"
		<b>DMX</b>	DMX512 All DMX drivers set to default address 001 and provided in remote enclosers. Contact us for other addressing needs			<b>SMTBSG</b>	Surface Mount, Tbar Clip, Slot Grid
						<b>WM</b>	Wall Mount
9	Optics	10	Sensors/Controls	11	Circuit	12	Options
<b>BKO</b>	Black Optic	<b>NA</b>	None	<b>NA</b>	None	<b>STD</b>	White Canopy + White Cord
		<b>EIS</b>	Enlighted sensor	<b>EMCKT</b>	Emergency circuit May require additional power feeds	<b>CAN-X</b>	Canopy + color See finish options <a href="#">here</a> .
		<b>WISM</b>	Wattstopper occupancy	<b>DAYCKT</b>	Daylight circuit May require additional power feeds.	<b>SJ-BLK</b>	Black cord
		<b>WISD</b>	Wattstopper daylight			<b>SJ-WHT</b>	White cord
		<b>ACM</b>	Acuity nLight® module only				
		<b>ACS</b>	Acuity nLight®				
		<b>CCS</b>	Casambi module				
		<b>AWNDR</b>	Lutron Athena Wireless Node Module				
		<b>AWNS</b>	Lutron Athena Wireless Sensor Module				
		<b>OTHER</b>	Consult Factory				

## Performance

Output <sup>1</sup>	Watts/ft	Lumens/ft	LPW
Low	5	119	24
Medium	7	158	23*
High	10	216	22

<sup>1</sup>Based on a typically configured 90 CRI, 3500K luminaire using one driver.  
Custom outputs available. Please consult factory.

For 4000K multiply by 1.05; for 3000K, 0.9%; for 2700K, 0.92.

\*80 CRI equivalent 27 LPW

## Technical Information



click [here](#) or scan QR code

Wiring diagrams, PoE and sensor details

# LS3 Black Optic direct

## Drivers & Electrical

Integral drivers\* with 0-10V Dimming standard. Several other driver options available; see ordering information.

\*DMX drivers are provided in remote enclosures.

## Sensors & Controls

Sensors are installed on an aluminum plate adjacent to the luminaire lens. Coronet remains agnostic in our approach to sensors and control systems; our fixtures are compatible with most systems offered.

## Emergency Back-Up

Emergency circuits for use with building generators available.

## PoE (Power over Ethernet)

Compatible with virtually all PoE systems including Moxel Coresync, Igor, Smartengine, Platformics, and NuLED SPICEbox.

Consult factory for systems not listed. See [here](#) for more info.

## Finishes

All luminaires are finished in high quality polyester powder coating. Our standard color is white. Any RAL color may be specified.

## Weight

5 lbs per foot

## Optics

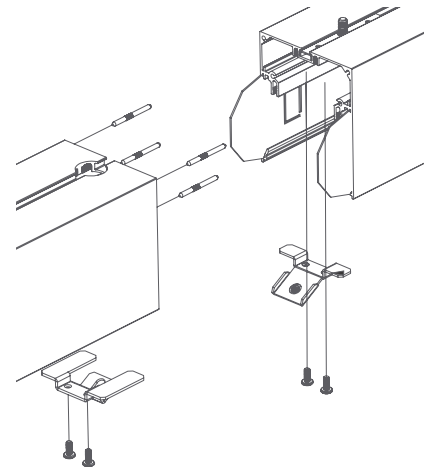
Room facing lens is black when unilluminated, seamlessly blending into dark environments. Uplight is available for some models.

## Construction

Housings are extruded premium, recycled aluminum. Individual fixtures are available up to 12' long and may be specified as nominal or precision lengths. Precision lengths are supplied within 1/8" tolerance.

## Joined Runs

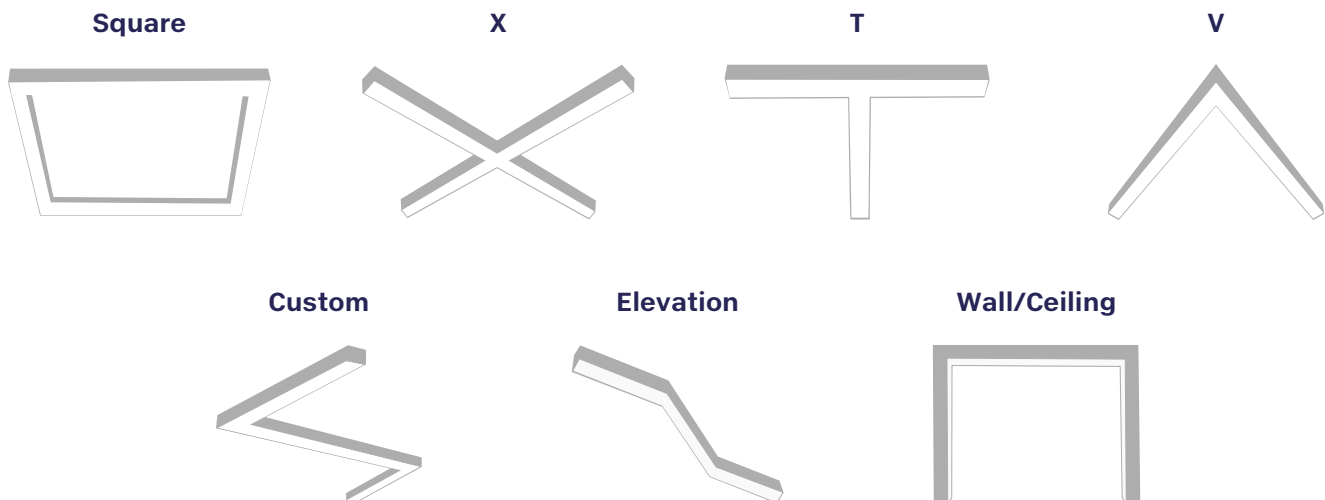
Runs of any length may be specified and are comprised of multiple, factory-engineered, joined sections. Individually specified luminaires are not field joinable.



Representative joinery. For product specific details see installation guides or submittal drawings.

## Patterns

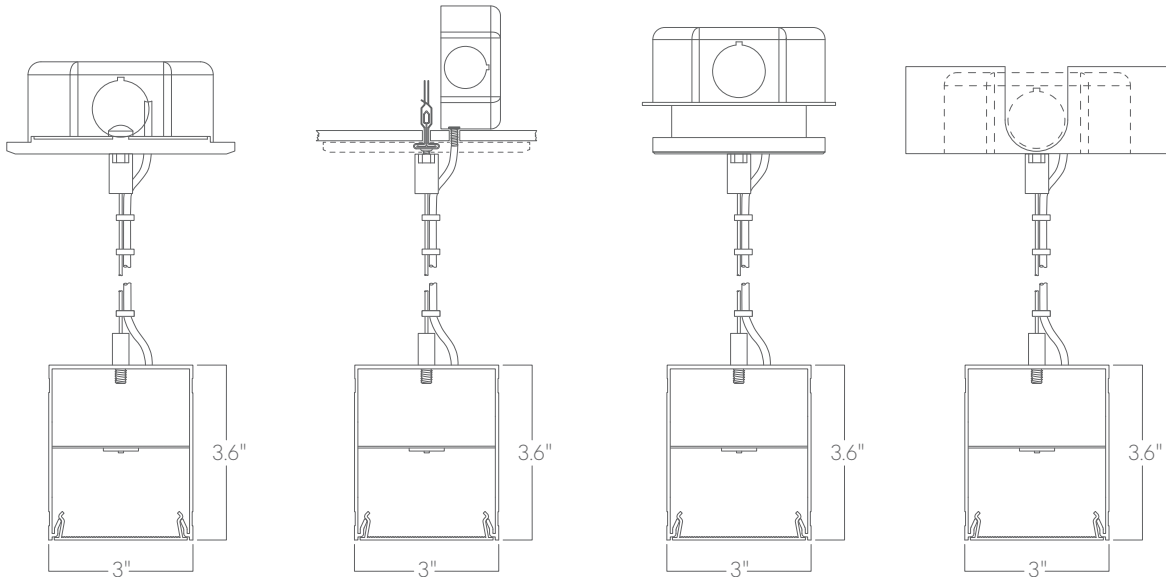
Featuring illuminated welded corners and angles. Consult factory for custom designs and elevations.



# LS3 Black Optic direct

## Mounting Options

Custom mounting types and ceiling transitions available; consult factory.

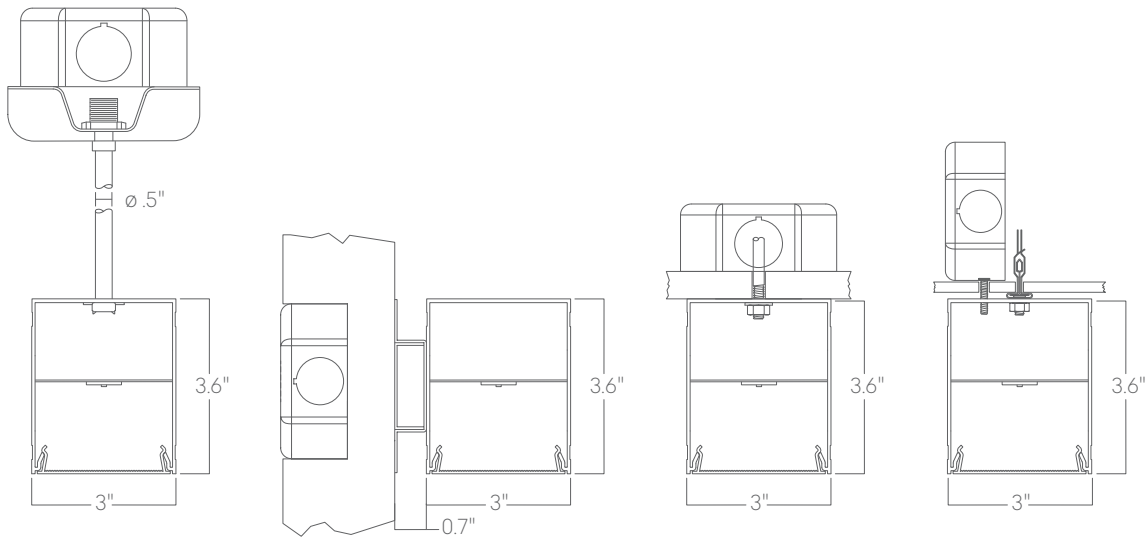


**Aircraft cable  
5" canopy**

**Aircraft cable  
5" canopy, T Bar clip**

**Aircraft cable  
3.5" canopy**

**Aircraft cable  
Conduit canopy  
with knockouts**



**Pendant stem**

**Wall mount**

**Surface mount  
Hard Ceiling**

**Surface mount  
T Bar clip**

Please consult factory shop drawings for suspension points.

To prevent damage to fixtures, factory designated suspension points must not be field altered.

Do not attempt installation if you do not understand the installation instructions.