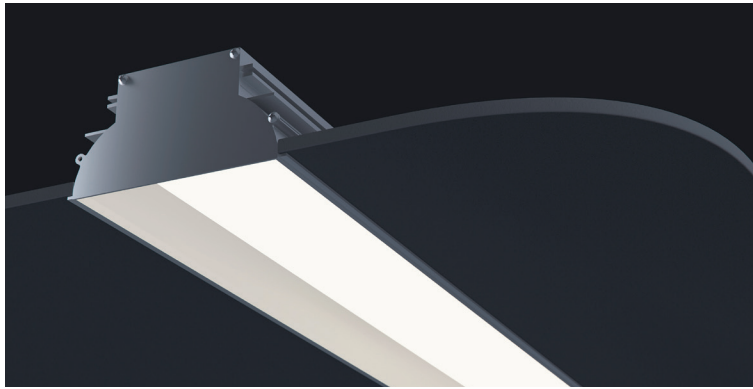





DATE _____ PROJECT _____ FIRM _____ TYPE _____



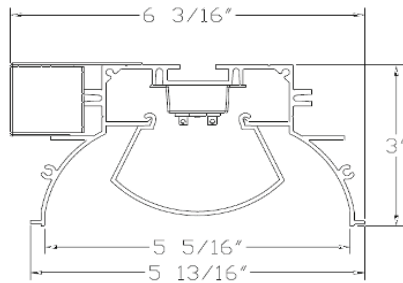
Recessed, architectural luminaire specially designed for 6" tech-zone ceilings. For use in indoor applications where an LED providing continuous light is required. Custom light outputs available.

FEATURES

- Available In Made To Measure Lengths Accurate Up To 1/16"
- Damp Location Rated
- CRI 90+ Standard; R9>50
- 5 Year, 50,000 Hour Fixture Warranty
- 2700K, 3000K, 3500K, 4000K & 5000K Color Temperatures Available
- Available with PoE

APPLICATIONS	Offices, Lobbies, Retail Stores, Classrooms, Reception Areas & Corridors		
CONSTRUCTION	Extruded Aluminum Housing	OPTICS	Extruded High Transmission Satin Acrylic Lens with No LED Imaging
WARRANTY	5 Year Limited Warranty (Covers Standard Components)	FINISH	Standard Powder-Coated White. Custom RAL Colors Available
FIXTURE RATINGS & CERTIFICATIONS	Union Made ETL Listed	Made In The USA Damp Location Rated	 
ELECTRICAL	Integral Driver with 0-10V Dimming Standard. Several Driver Options Available		DRIVERS & SENSORS  <p>For Wiring Diagrams and Sensor Information Click Here</p>

EXTRUSION DIMENSIONS



LED SYSTEM INFORMATION

	Nominal System Watts	Nominal Delivered Lumens	Nominal Efficacy
Standard (LTG1)	7.25 W/ft	710 lm/ft	98 LPW
Low (LTG2)	5 W/ft	500 lm/ft	100 LPW
High (LTG3)	10 W/ft	950 lm/ft	95 LPW

Standard CRI is 80+, must specify for requests over 90. Outputs reflected in chart based on 4000K color temperature. Custom outputs available; specify below.

ORDERING

1 2 3 4 5 6 7 8 9 10

1 - FIXTURE ID ZONE 6 LED	2 - LENGTH 4 - 4 ft 8 - 8 ft X'-X" - Specify Length	3 - COLOR TEMP 27 - 2700K/90 CRI 30 - 3000K/90 CRI 35 - 3500K/90 CRI 40 - 4000K/90 CRI 50 - 5000K/90 CRI TW* - Tunable White RGBW** - RGB + 3000K <small>*Must use DMX or TW10 Driver</small> <small>**Must use DMX Driver</small>	4 - LED SYSTEM LTG1 - Standard LTG2 - Low LTG3 - High LTGC - Custom Output	5 - VOLTAGE UNV - Universal (120/277V)	6 - DRIVER DB - Standard Dimming (0-10V) DB1% - 1% Dimming (0-10V) DB.1% - 0.1% Dimming (0-10V) LTEA - Lutron 2-wire 1% Dimming (120V only) LDE1 - Lutron Digital EcoSystem LDE5 - 5 Series EcoSystem; 5% Dimming PoE - Power over Ethernet. Consult Factory for Compatibility DMX - For Color Tuning and RGBW (Remote) TW10 - Dual Channel, 0-10V For Color Tuning (CCT and Intensity Control)
7 - FINISH W - White (Standard) CC - Custom Color (provide RAL#)	8 - MOUNTING TZ - 9/16" Tech Zone	9 - CIRCUIT (Optional) EM 120V - Emergency Pack EM 277V - Emergency Pack	10 - OTHER OPTIONS WH6 - 6ft Whips Preinstalled		