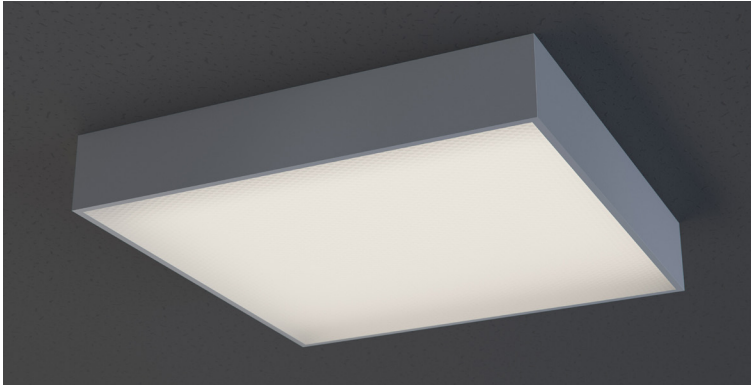


DATE \_\_\_\_\_ PROJECT \_\_\_\_\_ FIRM \_\_\_\_\_ TYPE \_\_\_\_\_



Specification grade, surface mounted luminaire with milk white lens. For use in indoor applications where an LED luminaire with maximum efficiency is required.

### FEATURES

- Damp Location Rated
- CRI 90+ Standard; R9>50
- 5 Year, 50,000 Hour Fixture Warranty
- 3000K, 3500K, 4000K & 5000K Color Temperatures Available
- Available with PoE

**APPLICATIONS** Office Areas, Stairwells, Corridors, Classrooms, Hospitals, Nursing Homes

**CONSTRUCTION** Die Formed and Spot Welded, Heavy Gauge Cold Rolled Steel Housing | **OPTICS** Milk White Lens

**WARRANTY** 5 Year Limited Warranty (Covers Standard Components) | **FINISH** Standard Powder-Coated White. Custom RAL Colors Available

**FIXTURE RATINGS & CERTIFICATIONS** Union Made ETL Listed | Made In The USA Damp Location Rated



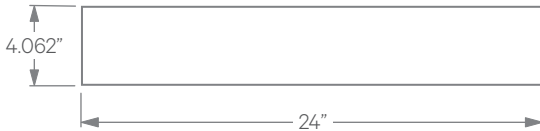
### DRIVERS & SENSORS



For Wiring Diagrams and Sensor Information Click [Here](#)

**ELECTRICAL** Integral Driver with 0-10V Dimming Standard. Several Driver Options Available

### EXTRUSION DIMENSIONS

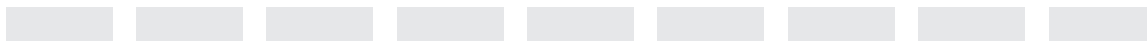


### LED SYSTEM INFORMATION

	Nominal System Watts	Nominal Delivered Lumens	Nominal Efficacy
Standard (LTG1)	29 W	2,920 lm	102 LPW
Low (LTG2)	20 W	2,085 lm	105 LPW
High (LTG3)	40 W	3,950 lm	99 LPW

Based on a 3500K luminaire using one driver. Custom outputs available; specify below.

### ORDERING



<b>1 - FIXTURE ID</b> BPR LED	<b>2 - LENGTH</b> 2x2	<b>3 - COLOR TEMP</b> 30 - 3000K/90 CRI 35 - 3500K/90 CRI 40 - 4000K/90 CRI 50 - 5000K/90 CRI TW* - Tunable White RGBW** - RGB+3000K <small>*Must use DMX or TW10 Driver **Must use DMX Driver</small>	<b>4 - LED SYSTEM</b> LTG1 - Standard LTG2 - Low LTG3 - High LTGC - Custom Output	<b>5 - VOLTAGE</b> UNV - Universal (120/277V)	<b>6 - DRIVER</b> DB - Standard Dimming (0-10V) DB1% - 1% Dimming (0-10V) DB.1% - 0.1% Dimming (0-10V) LTEA - Lutron 2-wire 1% Dimming (120V only) LDE1 - Lutron Digital EcoSystem LDE5 - 5 Series EcoSystem; 5% Dimming PoE - Power over Ethernet. Consult Factory for Compatibility DMX - For Color Tuning and RGBW (Remote) TW10 - Dual Channel, 0-10V For Color Tuning (CCT and Intensity Control)
<b>7 - FINISH</b> W - White (Standard) CC - Custom Color (provide RAL#)	<b>8 - MOUNTING</b> SM - Surface Mount PS - Pendant Stem	<b>9 - OTHER OPTIONS</b> EM 120V - Emergency Pack EM 277V - Emergency Pack EMCKT - Emergency Circuit WH6 - 6ft Whips Preinstalled			